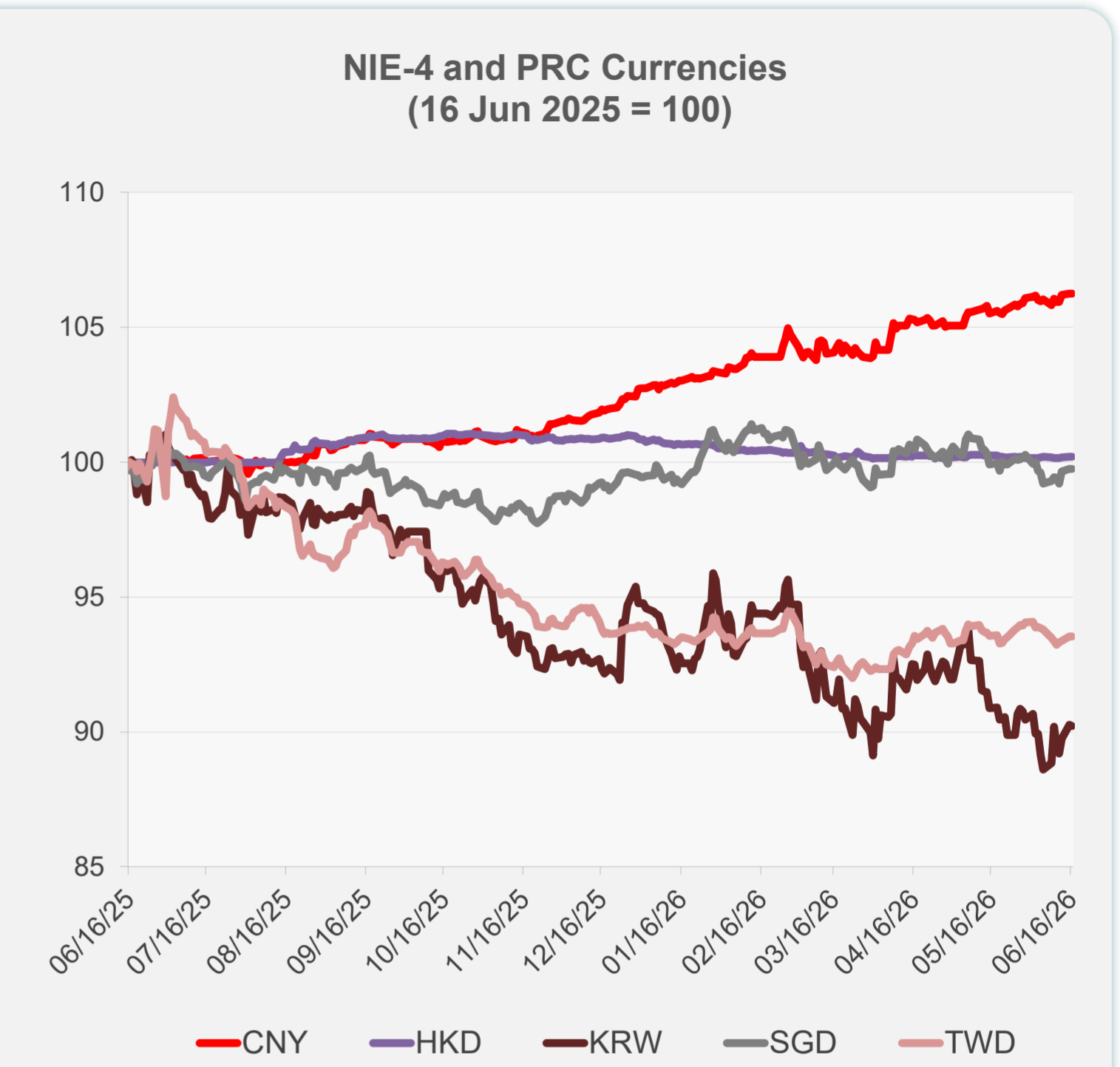
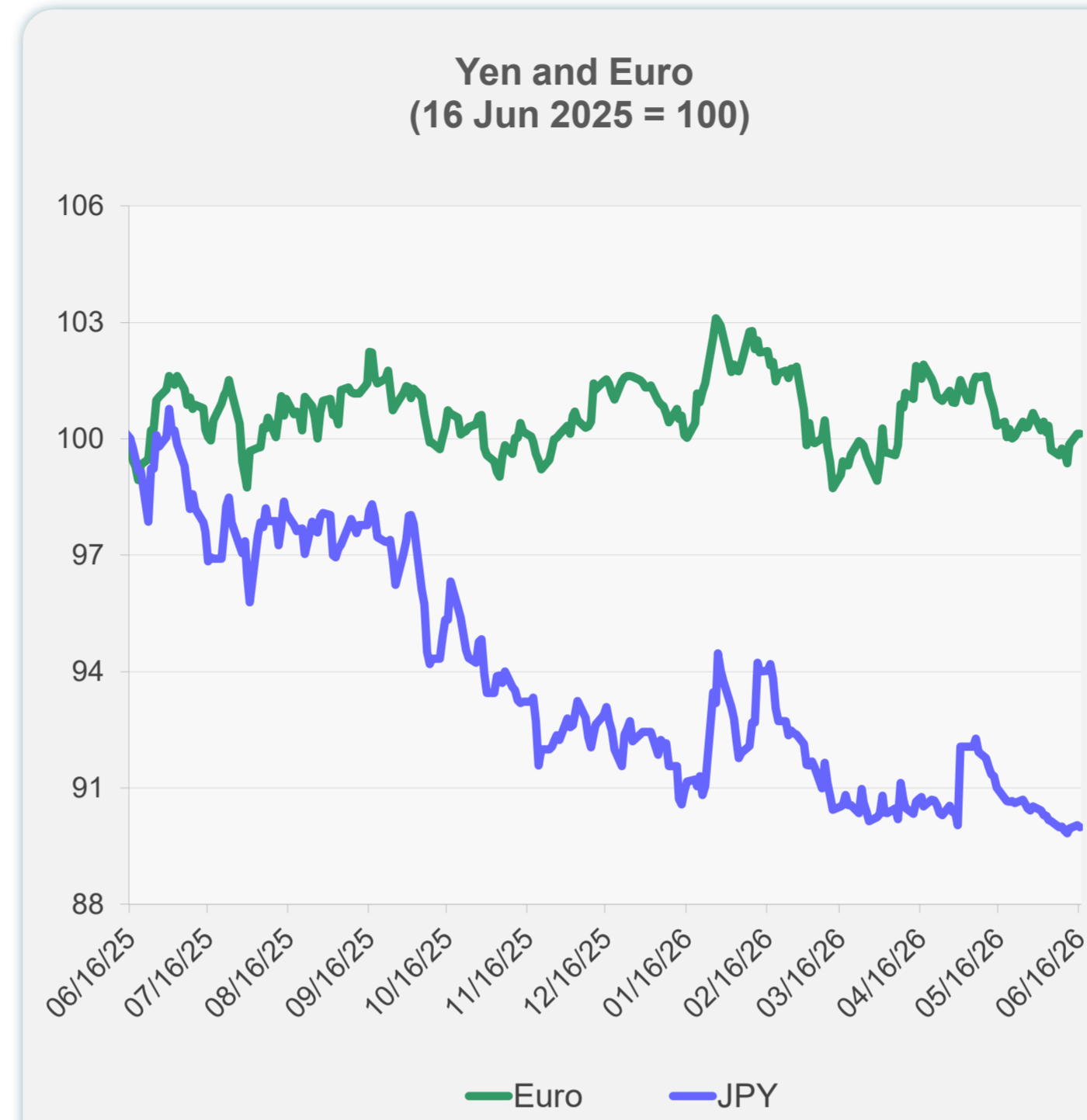
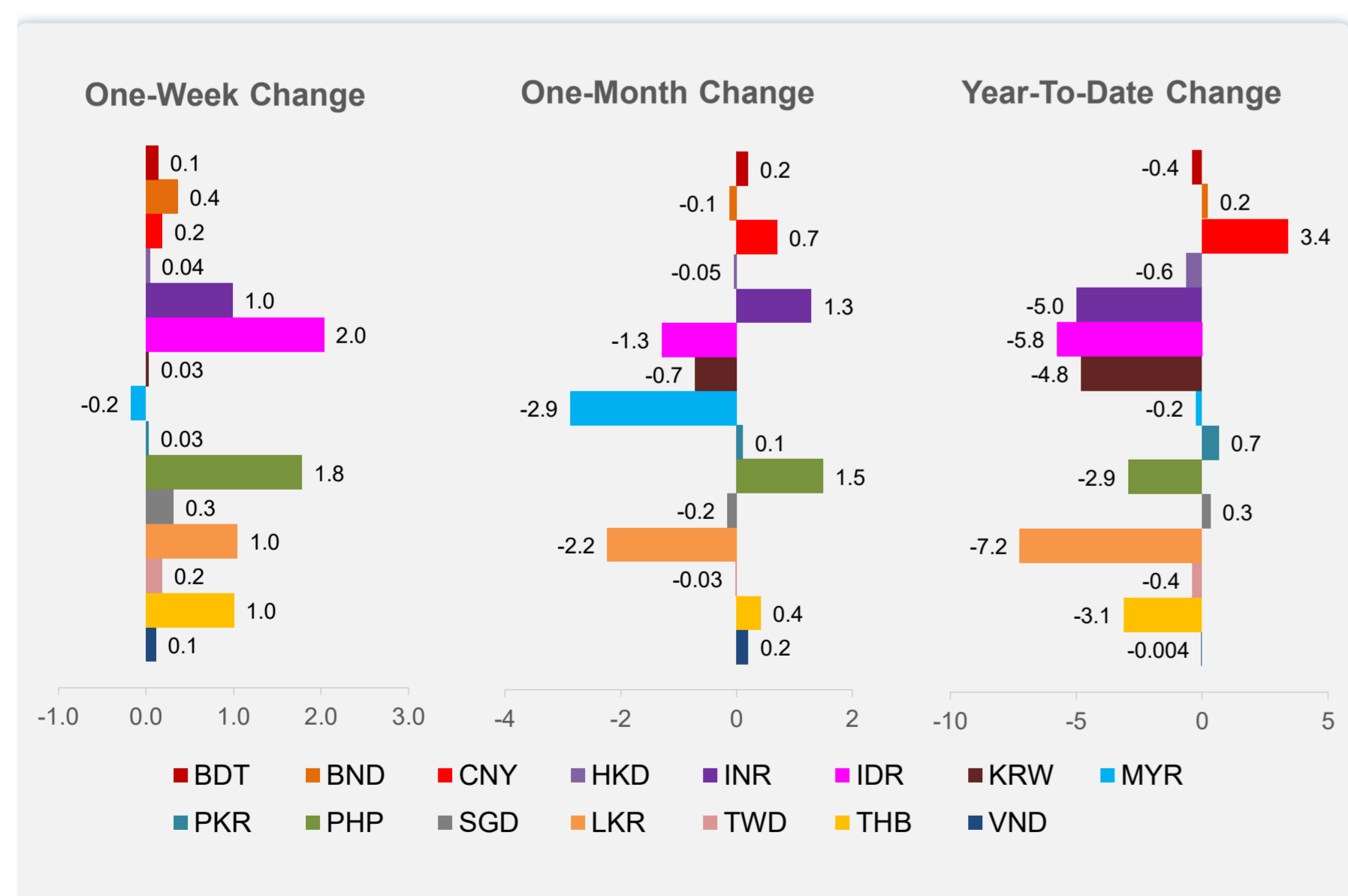
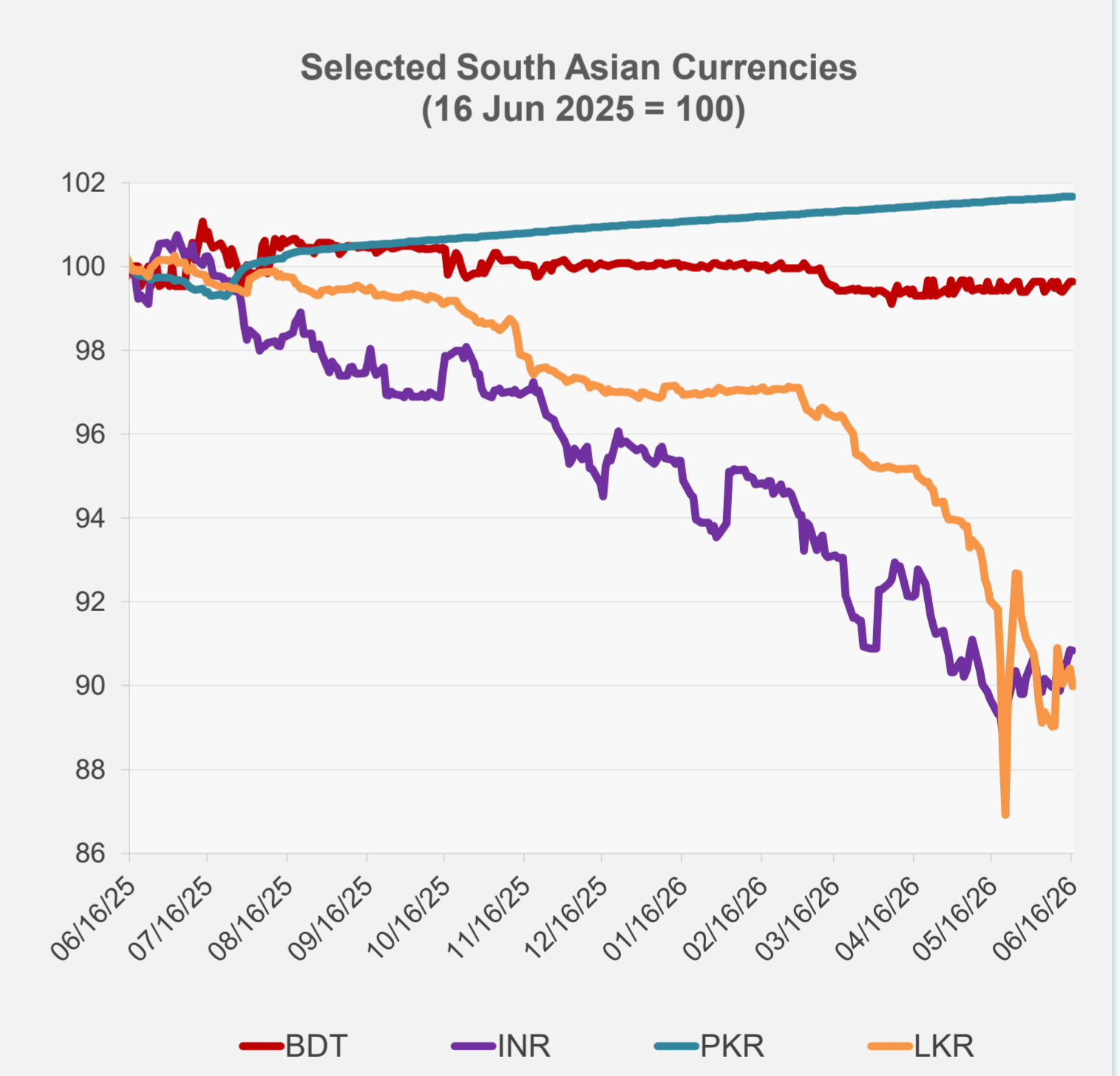
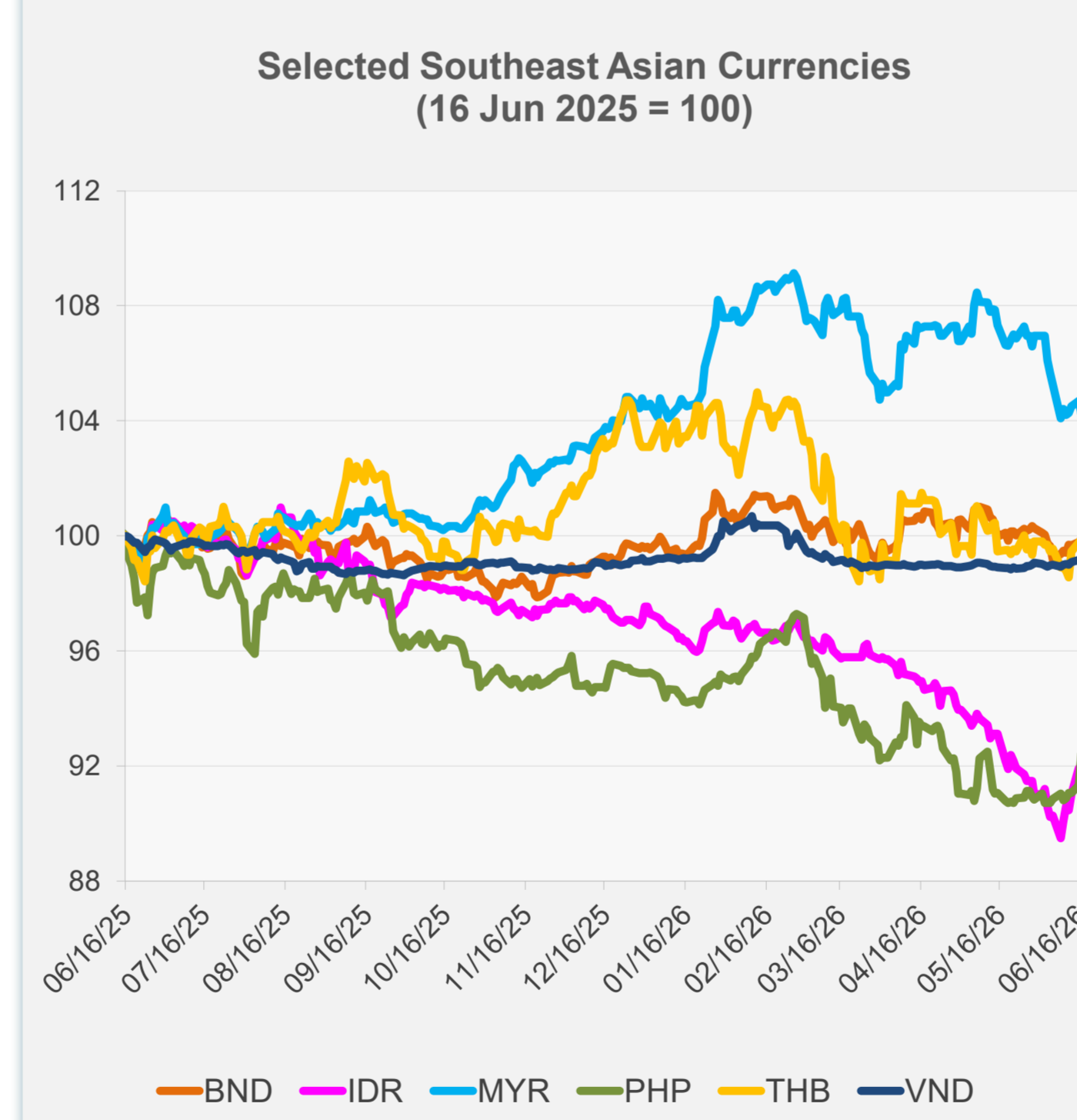


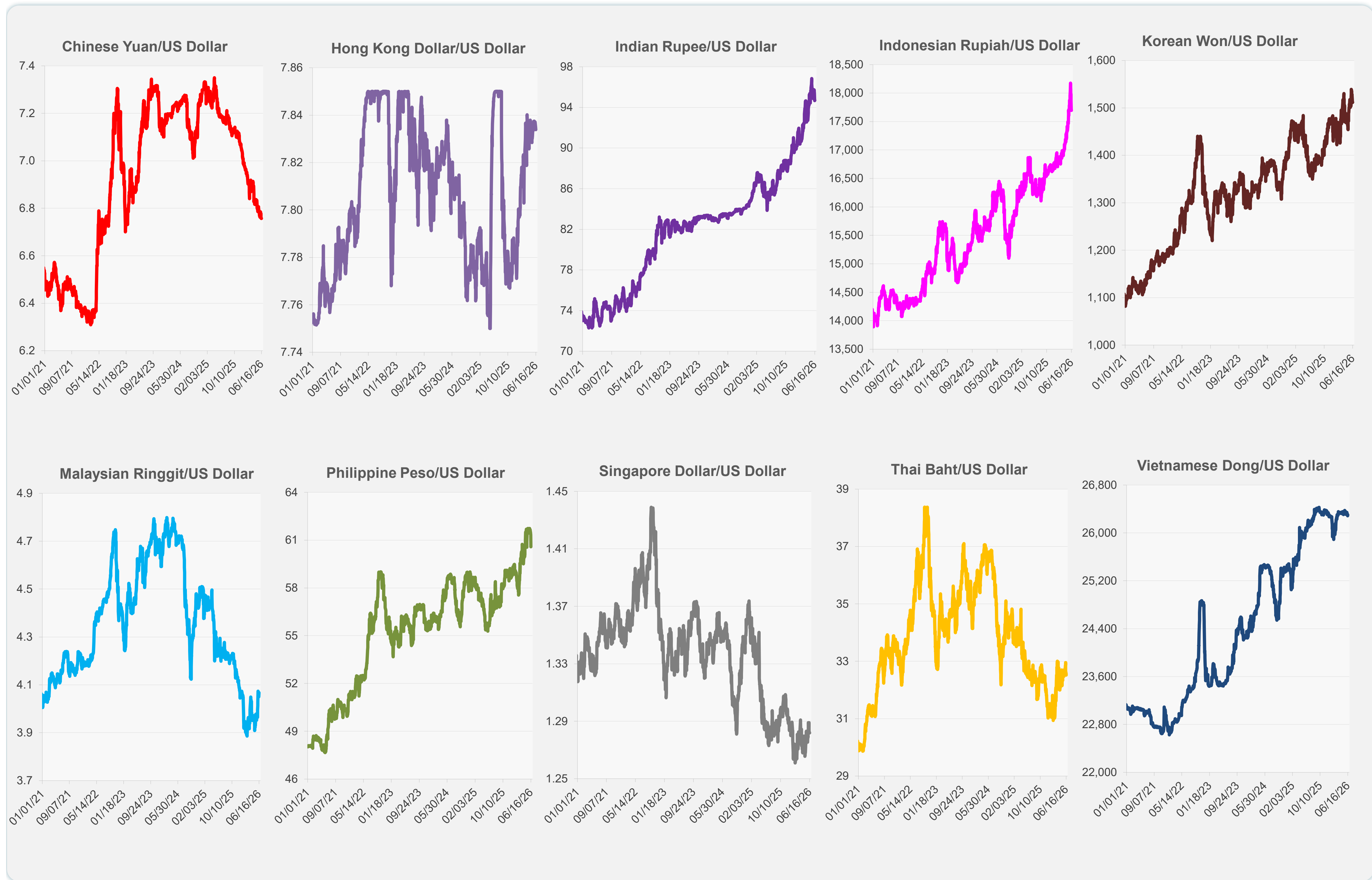
	Latest Closing	% change from Previous Day	% change from 01-Jan-26
Euro	0.86	0.00	-1.17
Japanese yen (JPY)	160.23	-0.06	-2.65
Bangladeshi taka (BDT)	122.75	0.00	-0.41
Brunei dollar (BND)	1.28	0.05	0.23
Chinese yuan (CNY)	6.76	0.00	3.41
Hong Kong dollar (HKD)	7.83	0.01	-0.64
Indian rupee (INR)	94.70	-0.02	-4.98
Indonesian rupiah (IDR)	17,694.50	0.00	-5.76
Korean won (KRW)	1,511.60	-0.03	-4.80
Malaysian ringgit (MYR)	4.07	-0.43	-0.25
Pakistan rupee (PKR)	278.27	0.01	0.66
Philippine peso (PHP)	60.59	1.22	-2.94
Singapore dollar (SGD)	1.28	0.00	0.32
Sri Lanka rupee (LKR)	333.75	-0.49	-7.24
Taipei,China NT dollar (TWD)	31.56	0.02	-0.38
Thai baht (THB)	32.52	0.14	-3.11
Vietnamese dong (VND)	26,301.00	-0.05	0.00



NIE = Newly Industrialized Economies



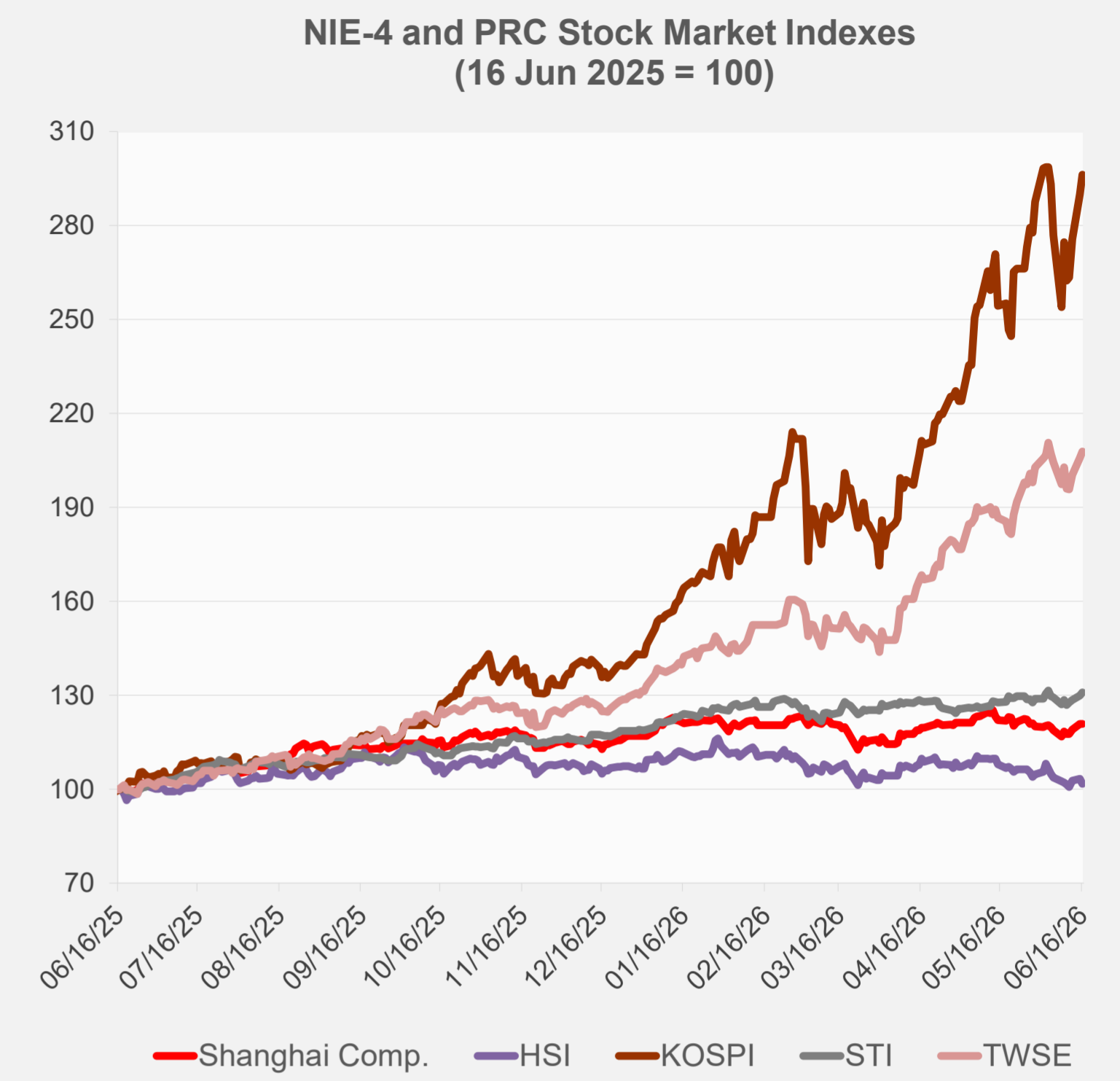
Note: Negative/Decreasing values indicate depreciation of local currency, and positive/increasing values indicate appreciation.
Source: ADB calculations using data from Bloomberg and Haver Analytics.



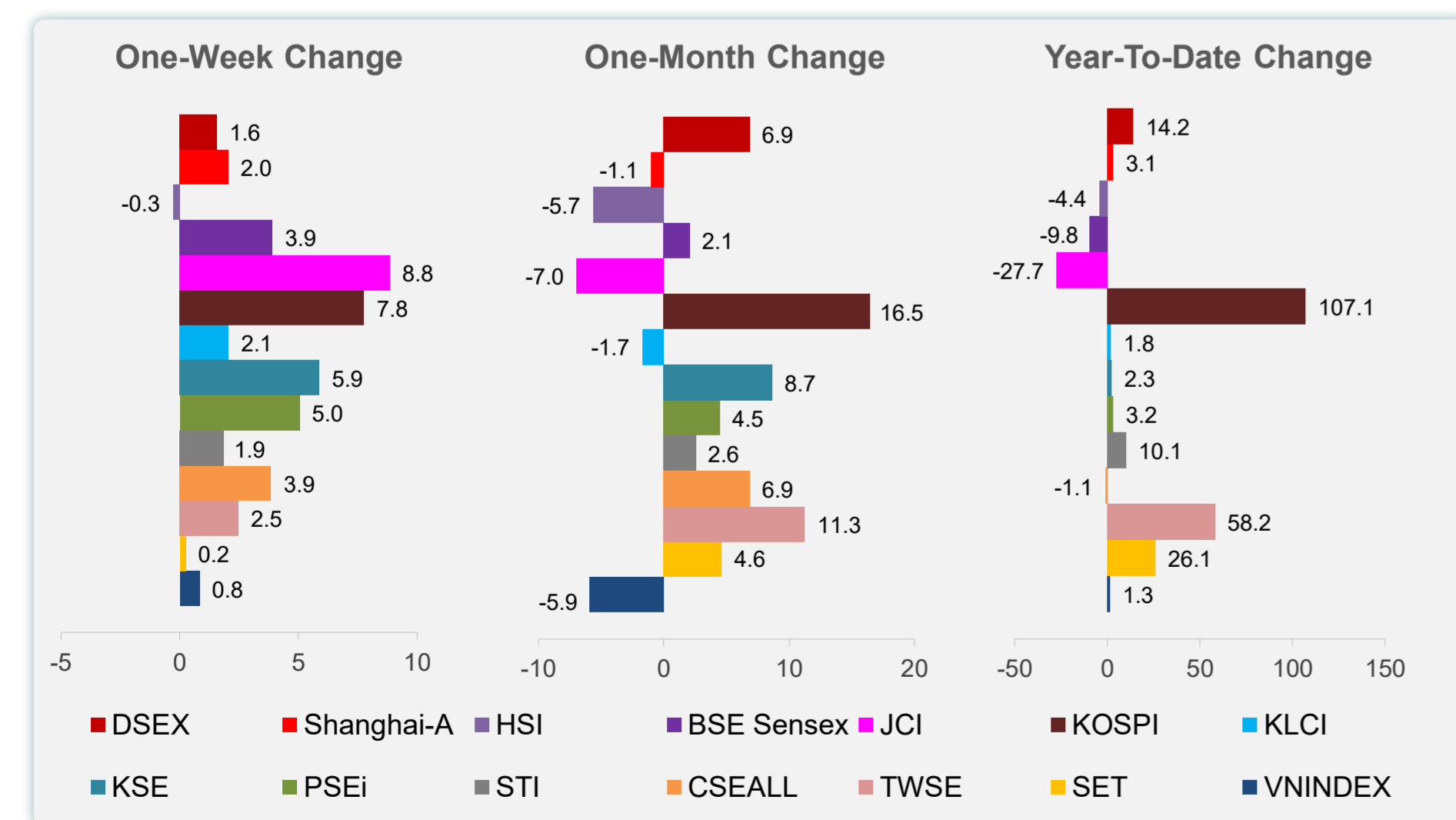
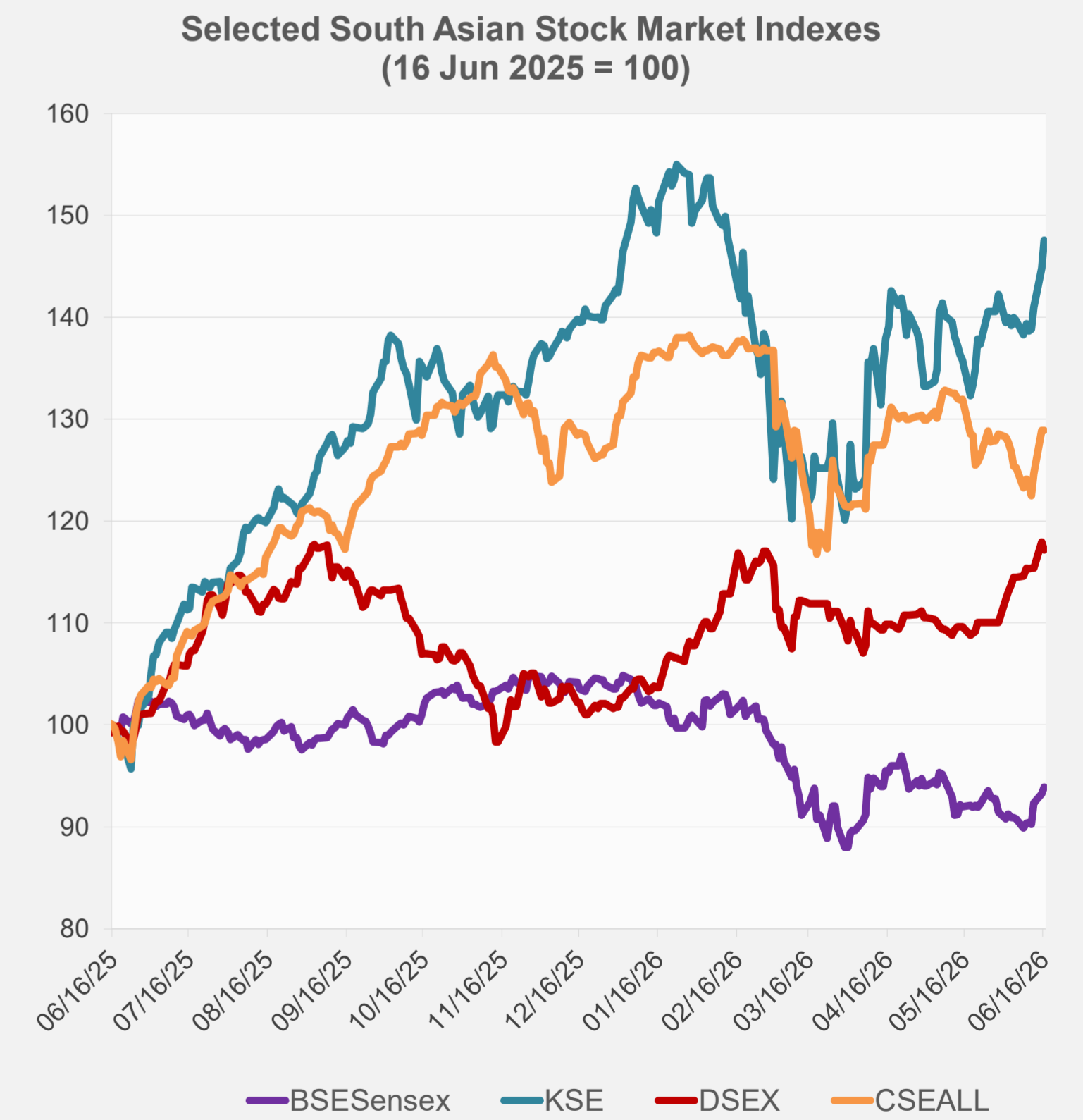
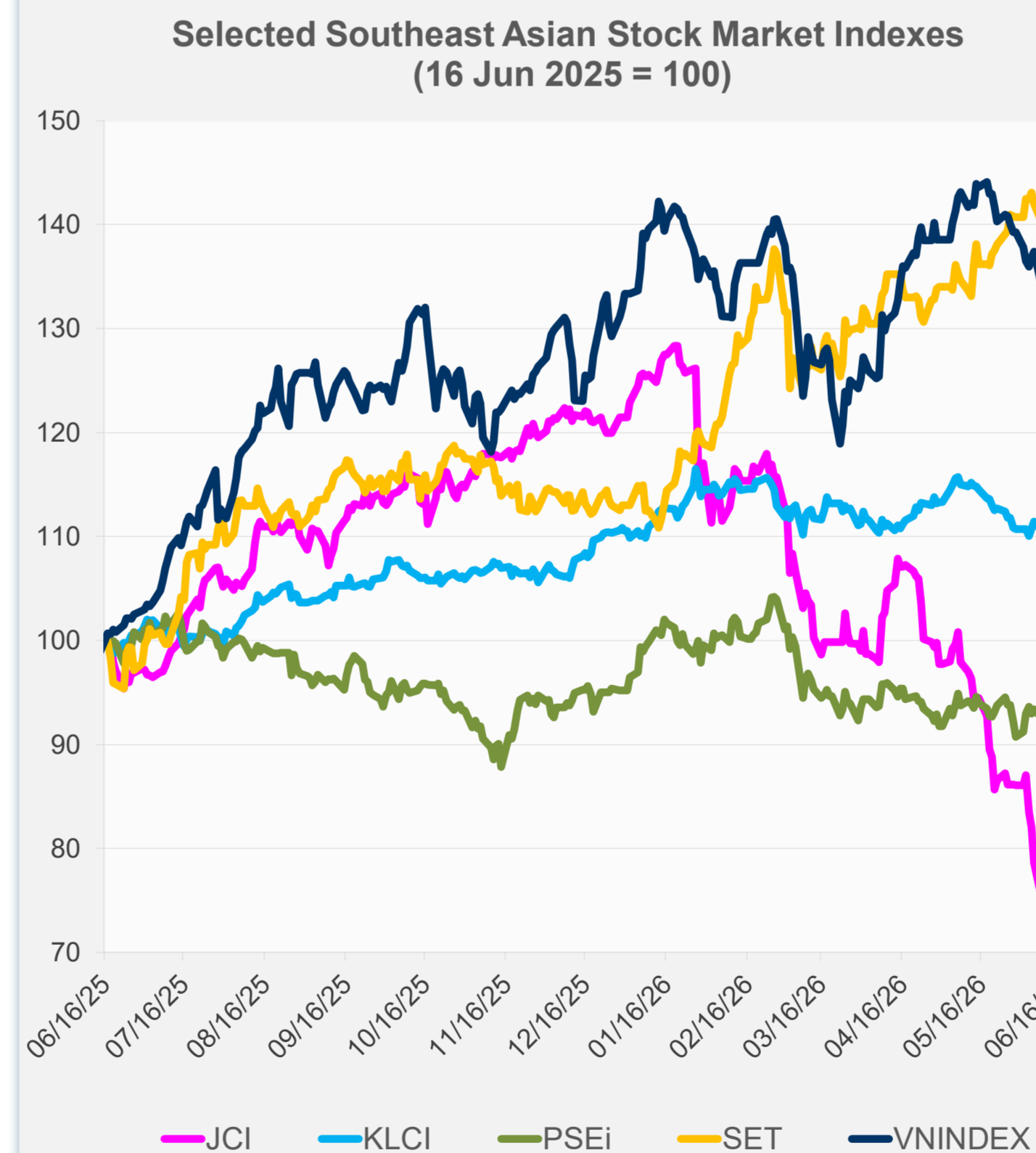
Source: Haver Analytics.

Daily Market Watch
STOCK INDEXES

	Latest Closing	% change from Previous Day	% change from 01-Jan-26
US Dow Jones Ind Avg	51,999.67	0.64	8.19
US NASDAQ	26,376.34	-1.15	13.49
US S&P 500	7,511.35	-0.57	9.73
UK FTSE 100	14,493.09	0.32	28.70
EURO STOXX 50	6,257.42	0.45	8.05
Japan NIKKEI 225	69,404.50	0.13	37.87
Bangladesh DSEX	5,605.57	-0.62	14.15
PRC Shanghai Comp.	4,091.89	-0.11	3.10
Hong Kong, China HSI	24,493.95	-1.40	-4.43
India BSE Sensex	76,808.48	0.71	-9.84
Indonesia JCI	6,254.97	0.00	-27.66
Korea, Rep. of KOSPI	8,726.60	2.11	107.08
Malaysia KLCI	1,709.99	1.10	1.78
Pakistan KSE 100	180,474.20	1.90	2.27
Philippines PSEi	6,245.75	-0.43	3.19
Singapore STI	5,116.86	0.78	10.13
Sri Lanka CSEALL	22,377.29	-0.02	-1.09
Taipei, China TWSE	45,809.19	0.91	58.16
Thailand SET	1,588.05	-0.23	26.07
Viet Nam VNINDEX	1,807.94	0.48	1.31



NIE = Newly Industrialized Economies



Sources: ADB calculations using data from Bloomberg and CEIC Data Company.

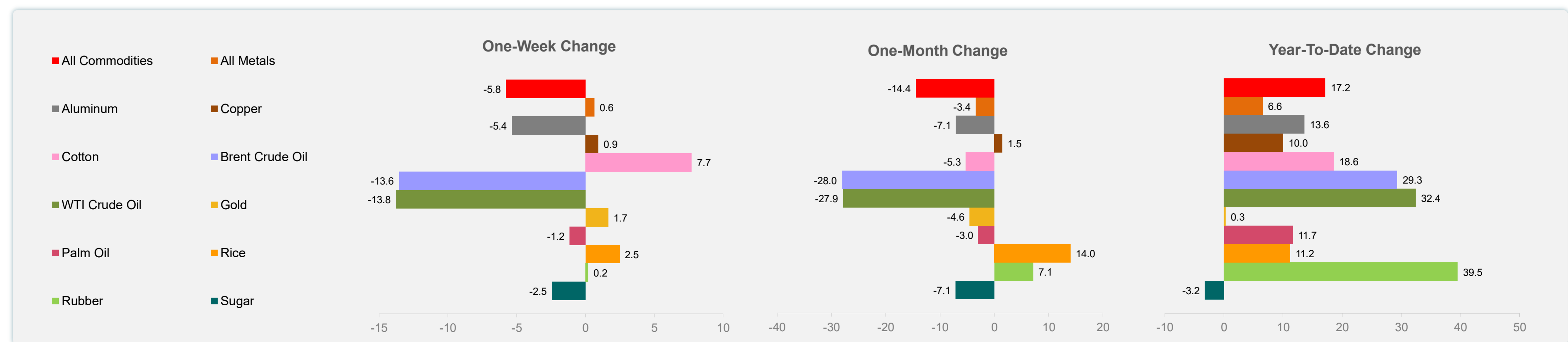
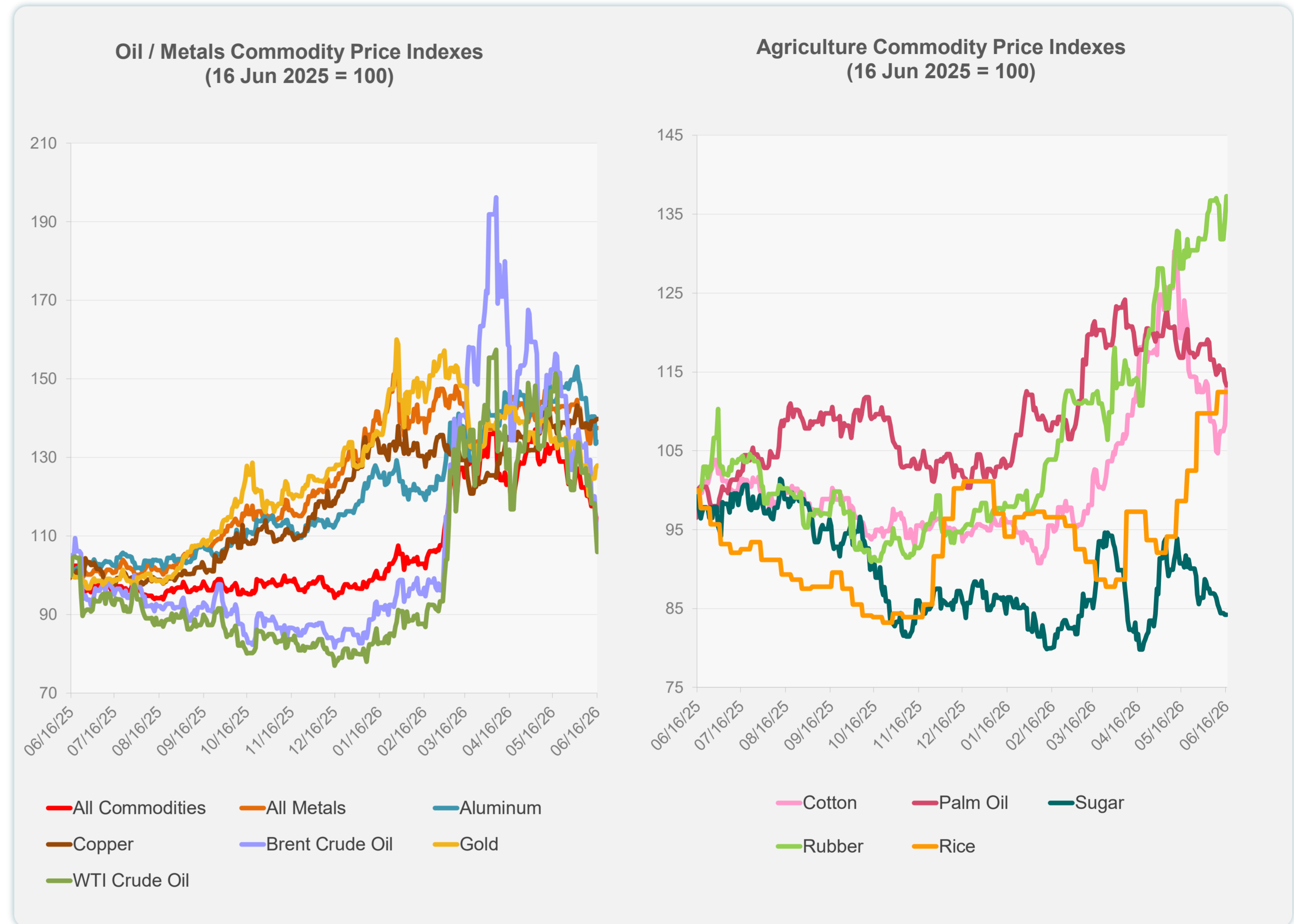


Sources: ADB calculations using data from Bloomberg and CEIC Data Company.

Daily Market Watch
COMMODITY PRICES

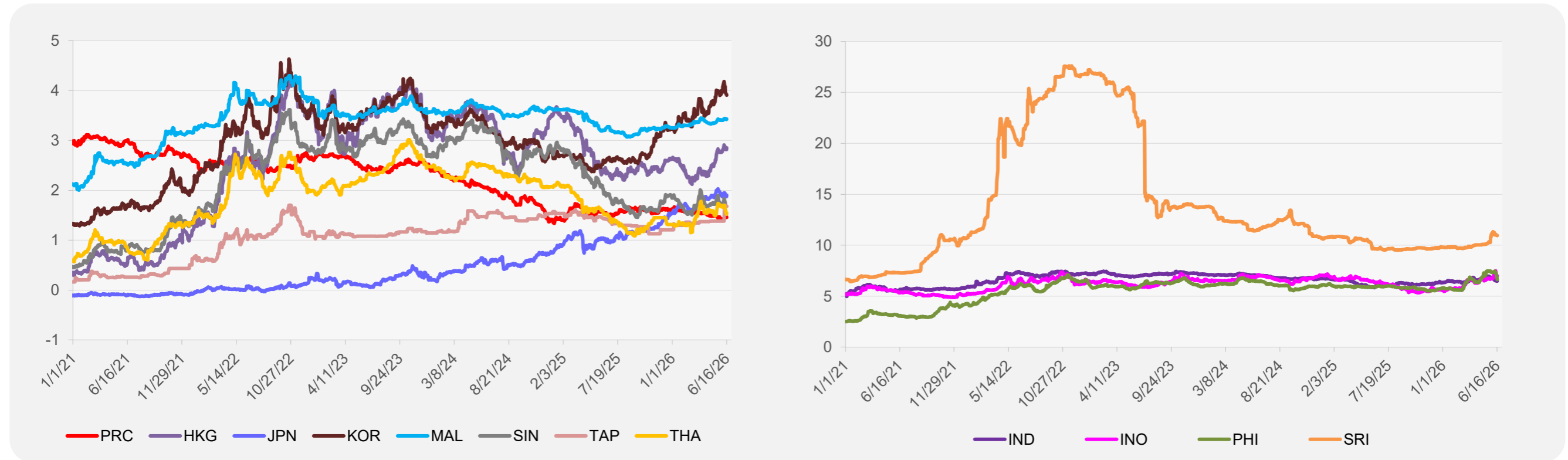
	Unit	Latest Closing	% change from Previous Day	% change from 01-Jan-26
S&P All Commodities	US\$	642.64	-1.73	17.16
S&P All Metals	US\$	472.99	0.11	6.59
Aluminum	US\$/metric ton	3,371.94	0.40	13.61
Copper	US\$/metric ton	13,699.90	0.22	10.01
Cotton	US cents/lb	73.53	4.40	18.56
Brent Crude Oil	US\$/barrel	80.76	-4.51	29.33
WTI Crude Oil	US\$/barrel	76.05	-5.82	32.45
Gold	US\$/troy oz	4,331.21	0.45	0.27
Palm Oil	US\$/metric tonne	1,081.58	-0.46	11.66
Rice ¹	US\$/metric ton	496.00	0.00	11.21
Rubber ²	US\$/kg	300.00	2.28	39.53
Sugar	US cents/lb	14.31	0.00	-3.25

¹ Latest closing price from 10 June 2026.
² Singapore Exchange, Ribbed Smoked Sheet Rubber.

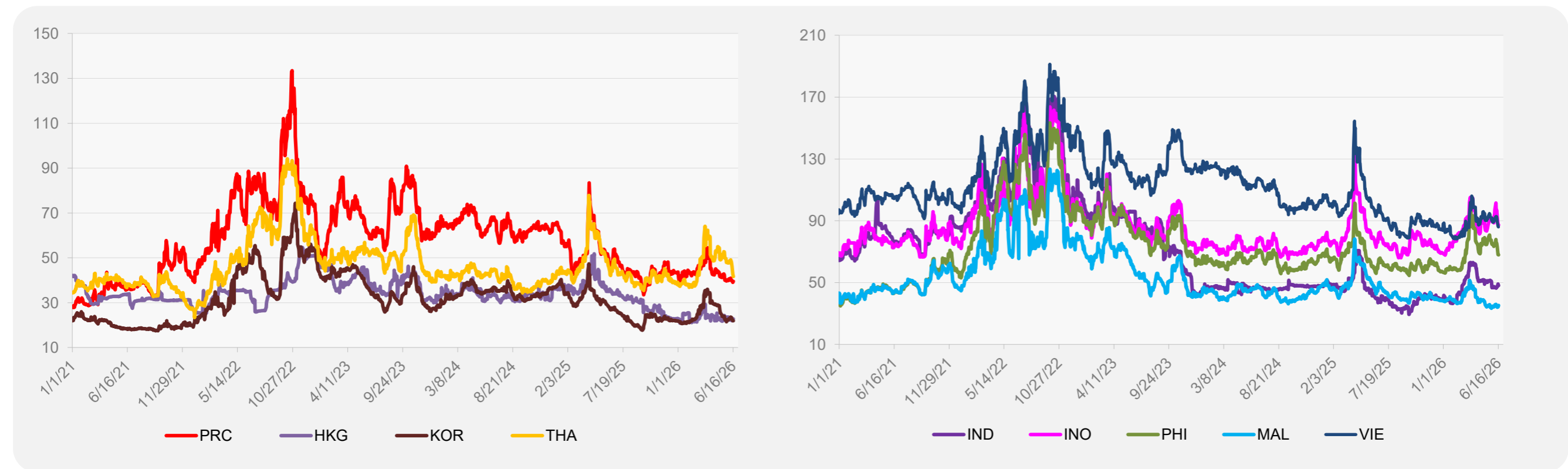


Source: ADB calculations using data from Bloomberg.

5-YEAR LOCAL CURRENCY GOVERNMENT BOND YIELDS (%)



5-YEAR CREDIT DEFAULT SWAP¹



¹ In USD and based on sovereign bonds.
Source: ADB calculations using data from Bloomberg.